



PRECISION

COMPENSATED SONIC

Compact

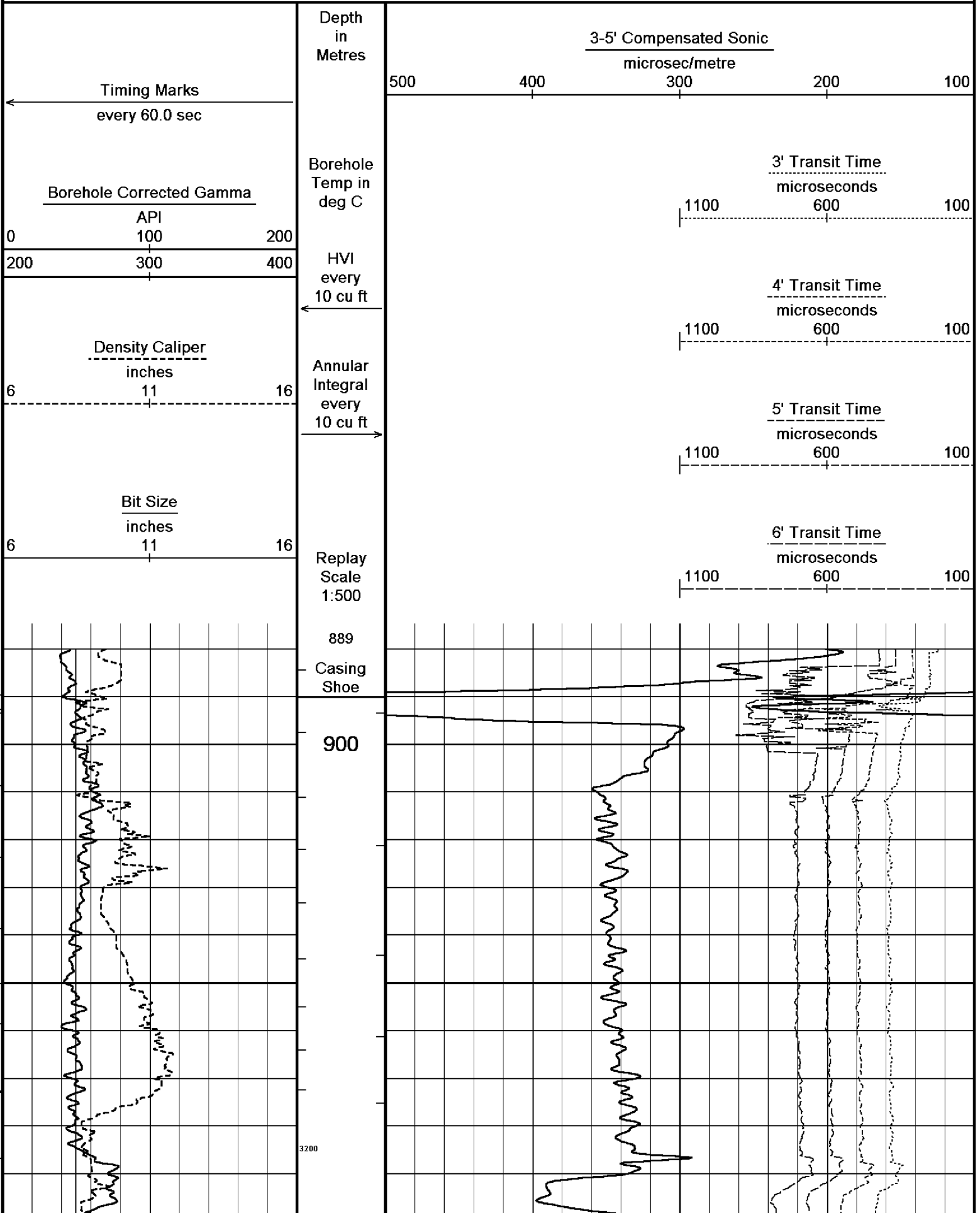
1:500 MD

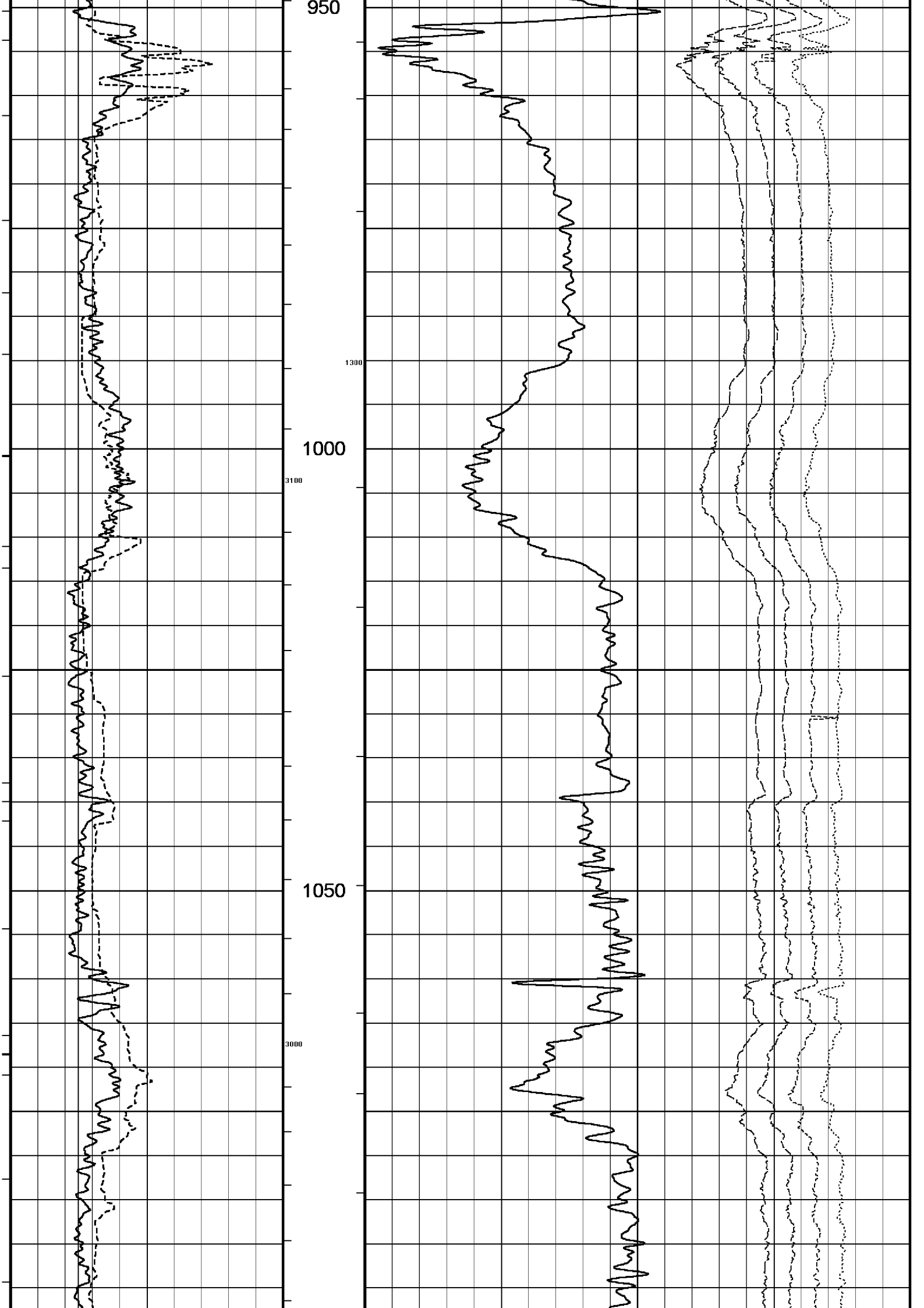
COMPANY			ESSO AUSTRALIA PTY.LTD		
WELL			WKF W27A		
FIELD			KINGFISH GDA94		
PROVINCE/COUNTRY			BASS STRAIT, VICTORIA		
COUNTRY/STATE			AUSTRALIA		
LOCATION			S 38 35 34.851, E 148 6 20.022		
			N 5727806.021 m, E 596279.875 m		
			FIELD PRINT		
LSD	SEC	TWP	RGE	Other Services	
				COMPENSATED NEUTRON	
API Number				PHOTO DENSITY	
Permit Number				DUAL LATEROLOG	
Permanent Datum MSL				, Elevation 0.0 metres	
Log Measured From DF @ 33.43m				above Permanent Datum	
Drilling Measured From DF					
Date	26-JUL-2006				
Run Number	ONE				
Depth Driller	3093.00			metres	
Depth Logger	3093.00			metres	
First Reading	3090.00			metres	
Last Reading	895.00			metres	
Casing Driller	895.00			metres	
Casing Logger	895.00			metres	
Bit Size	8.50			inches	
Hole Fluid Type	KCL/PHPA				
Density / Viscosity	1.16 g/cc		26.00 CP		
PH / Fluid Loss	9.50		2.80 ml/30Min		
Sample Source	FLOWLINE				
Rm @ Measured Temp	0.105 @ 25.0			ohm-m	
Rmf @ Measured Temp	0.08 @ 25.0			ohm-m	
Rmc @ Measured Temp	0.081 @ 25.0			ohm-m	
Source Rmf / Rmc	MEAS		MEAS		
Rm @ BHT	0.046 @ 87.1		ohm-m		
Time Since Circulation	28 HOURS				
Max Recorded Temp	93.80		deg C		
Equipment Name	CML				
Equipment / Base	1		SALE		
Recorded By	R L TENCH, B J R MOSS				
Witnessed By	T LOBO				
LAST CIRC.	12:25 24/07			Last Line	

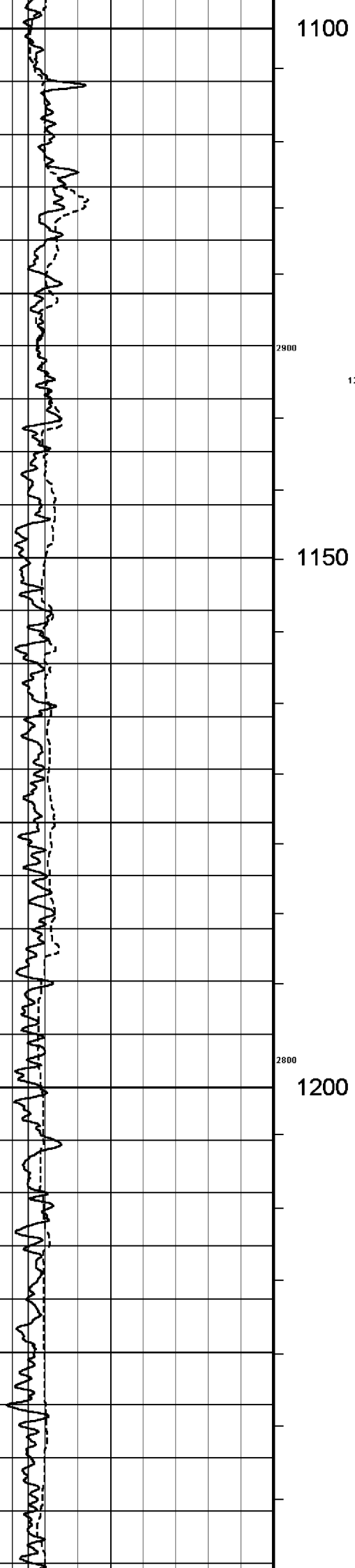
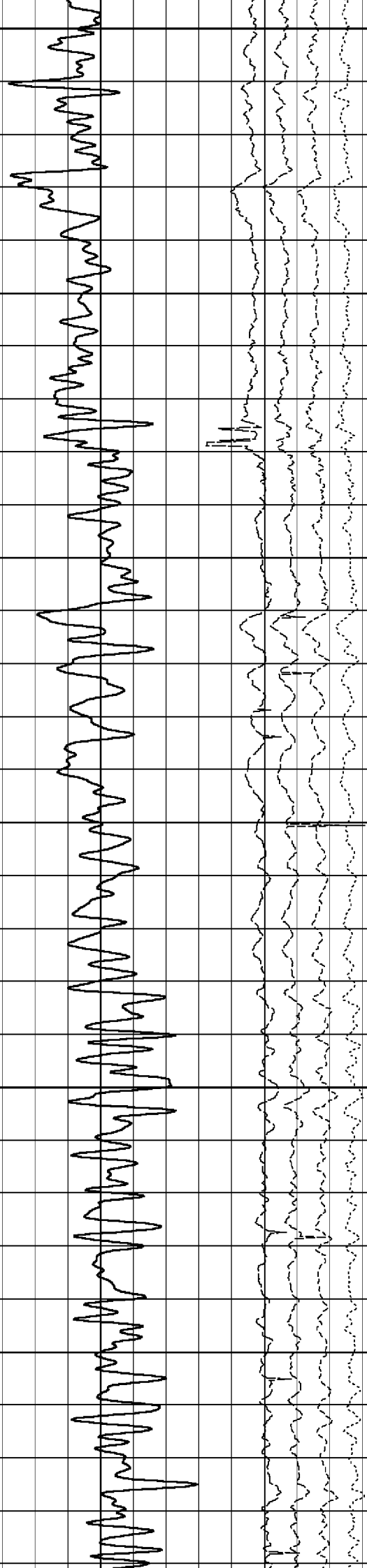
BOREHOLE RECORD				
Bit Size inches		Depth From metres		Depth To metres
8.500		895.00		3095.00
CASING RECORD				
Type	Size inches	Depth From metres	Shoe Depth metres	Weight pounds/ft
K-55	10.750	0.00	895.00	40.50

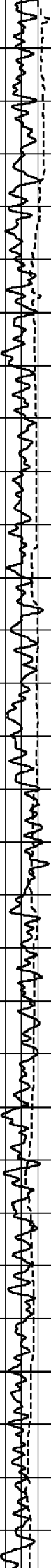
REMARKS
RIG: NABORS 453
5" SHUTTLE/MEMORY COMPACT OPERATION. CREW: R TENCH , B MOSS , J.BLESSING, M KOLCZE.
FIELD FINAL LOGS TO BE CORRELATED TO ANADRILL GAMMA LOG.
MAX. TEMPERATURE: 93.8 DEG C AT 3041m MD MAX. INCLINATION: 46.10 DEG AT 3095 m MD MAX. DOGLEG SEVERITY: 5.03 DEG/30m AT 993.08 m MD DEPLOYMENT ANGLE: 46.10 DEG
HVOL: 3285 FT^3 AVOL: 1382 FT^3
LOGGING SPEED 6M/MIN FROM TD TO 2791.52 M MD LOGGING SPEED 12 M/MIN FROM 2791.52 TO 1297.42 M MD LOGGING SPEED 6 M/MIN FROM 1297.42 TO 1125.7 M MD LOGGING SPEED 12 M/MIN FROM 1125.7 TO 866.87 M MD
BRIDGED OFF AT 2364M MD, REQUIRED 3BBLs FLOW TO PASS BRIDGE.

All interpretations are opinions based on inferences from electrical or other measurements and we cannot, and do not, guarantee the accuracy or correctness of any interpretations, and we shall not, except in the case of gross or wilful negligence on our part, be liable or responsible for any loss, costs, damages or expenses incurred or sustained by anyone resulting from any interpretation made by any of our officers, agents or employees. These interpretations are also subject to our general terms and conditions in our price schedule.









1250

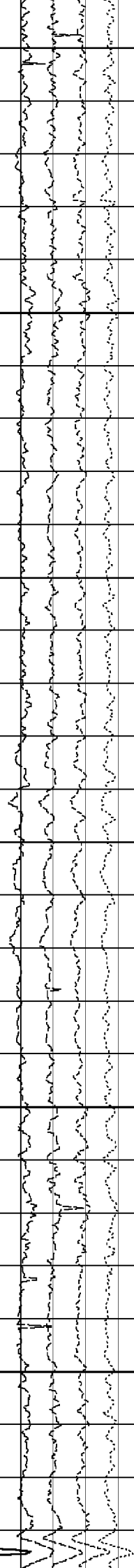
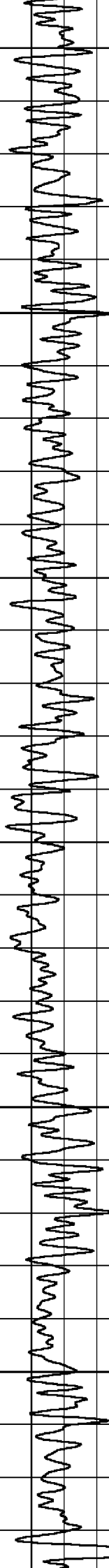
2700

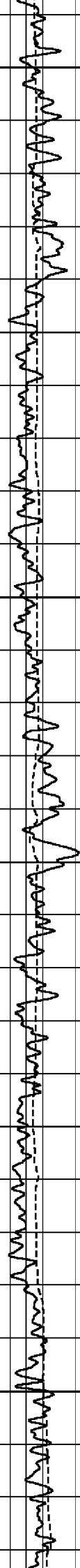
1300

1100

2600

1350





1400

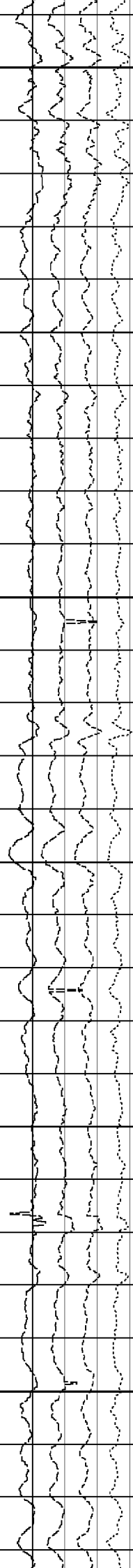
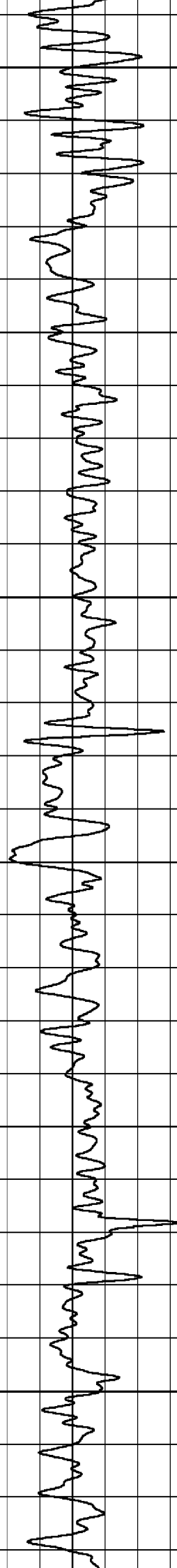
2500

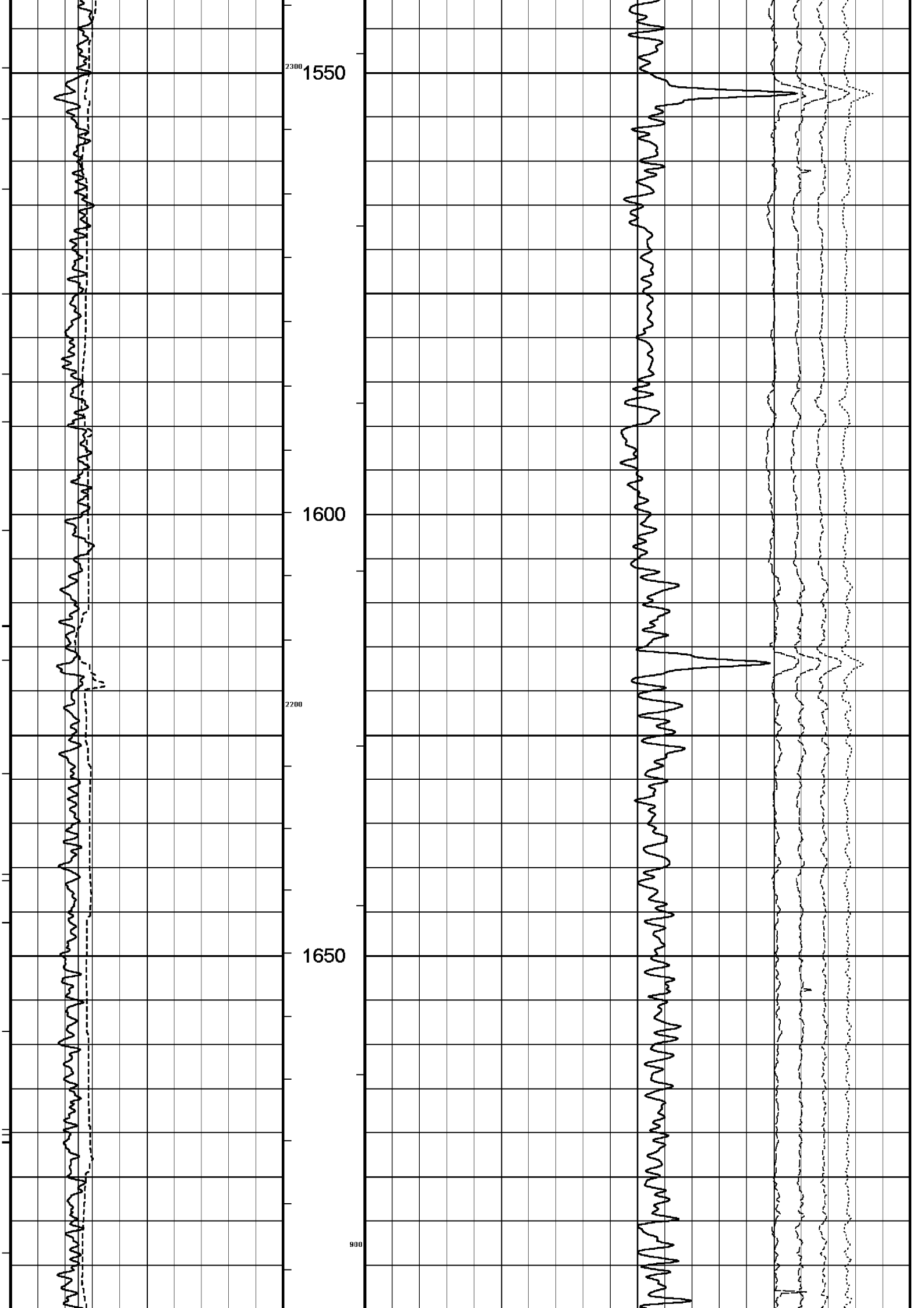
1450

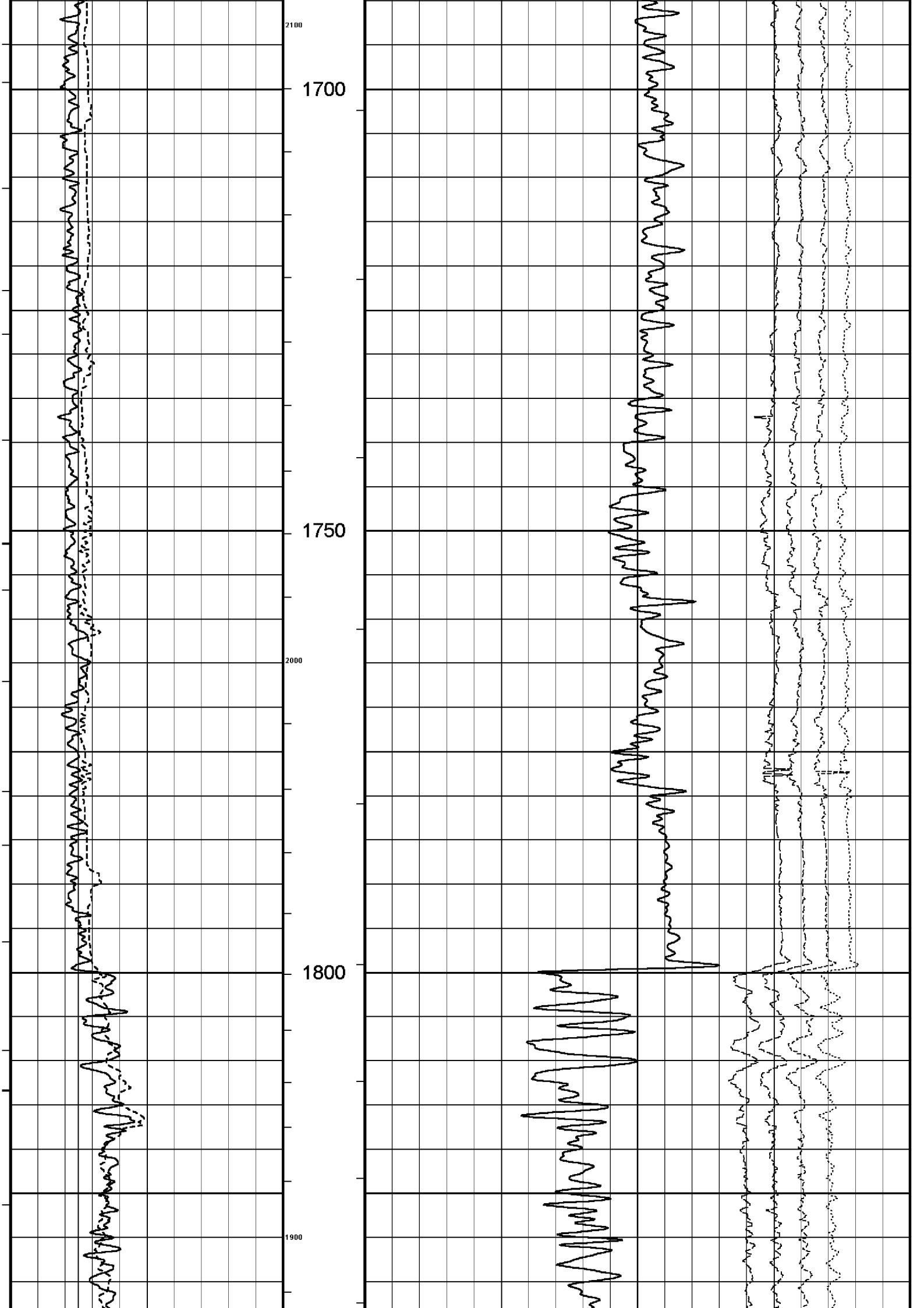
2400

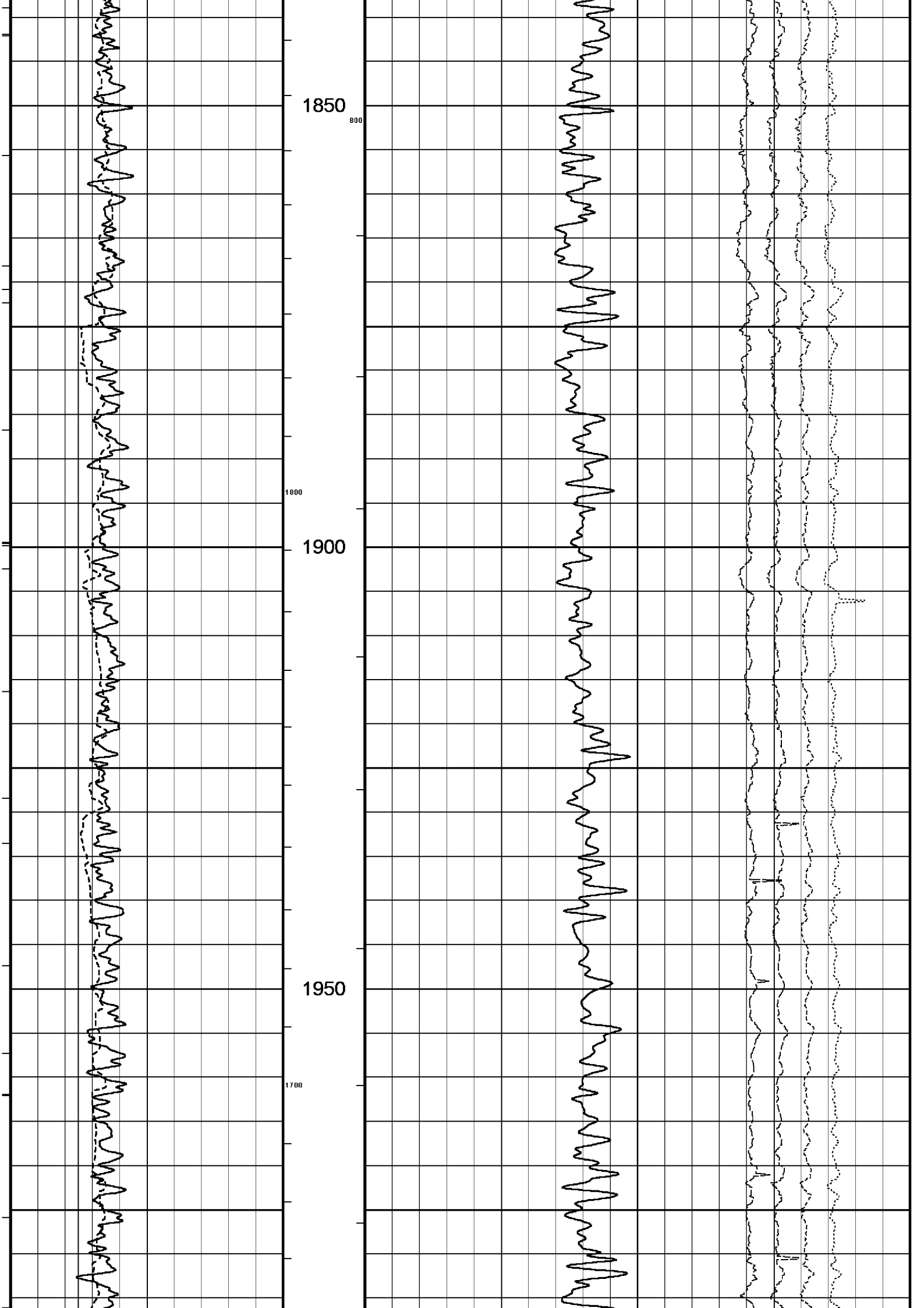
1000

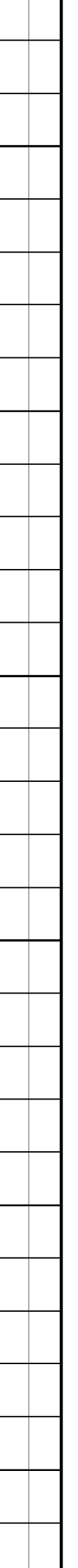
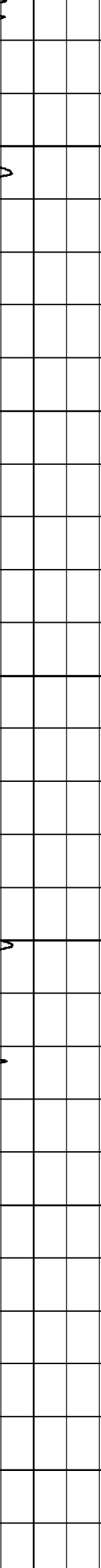
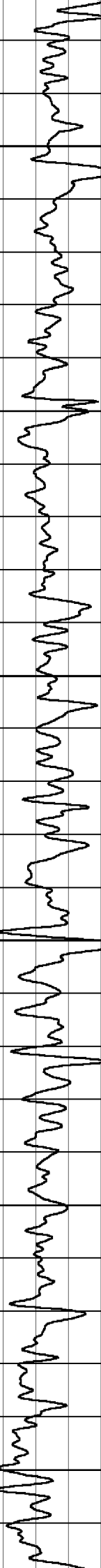
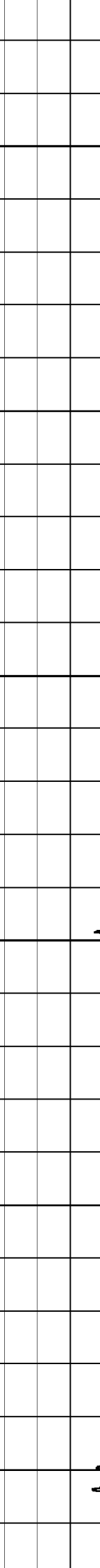
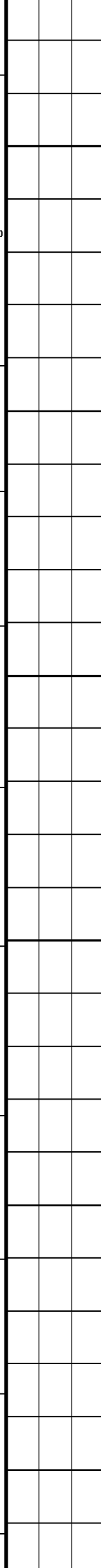
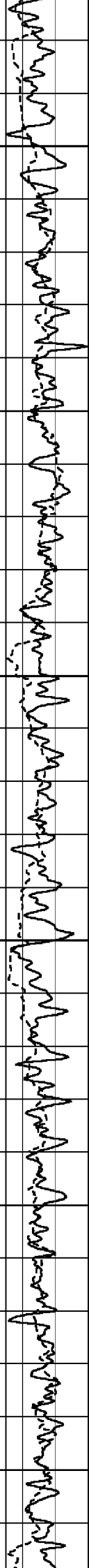
1500

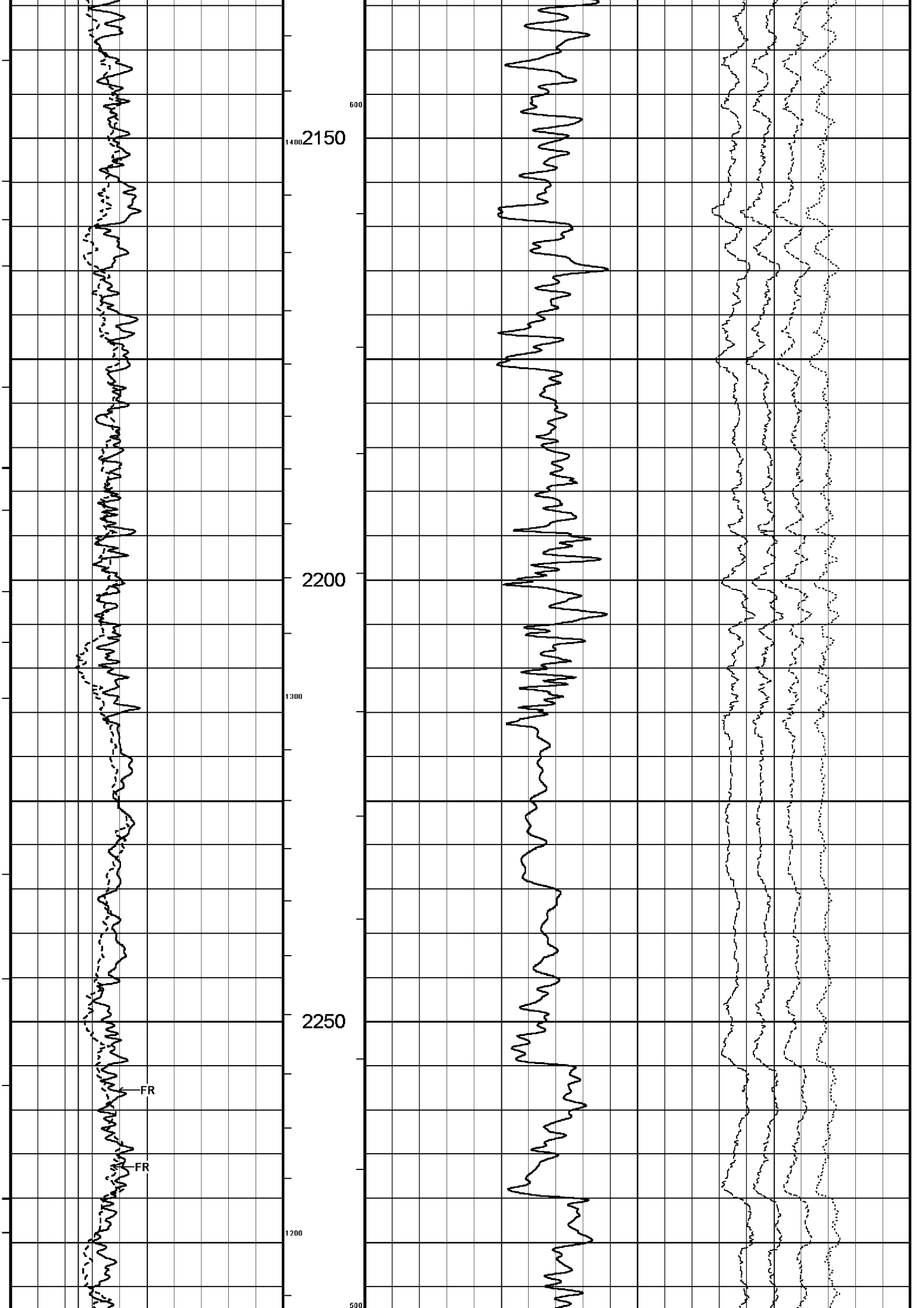


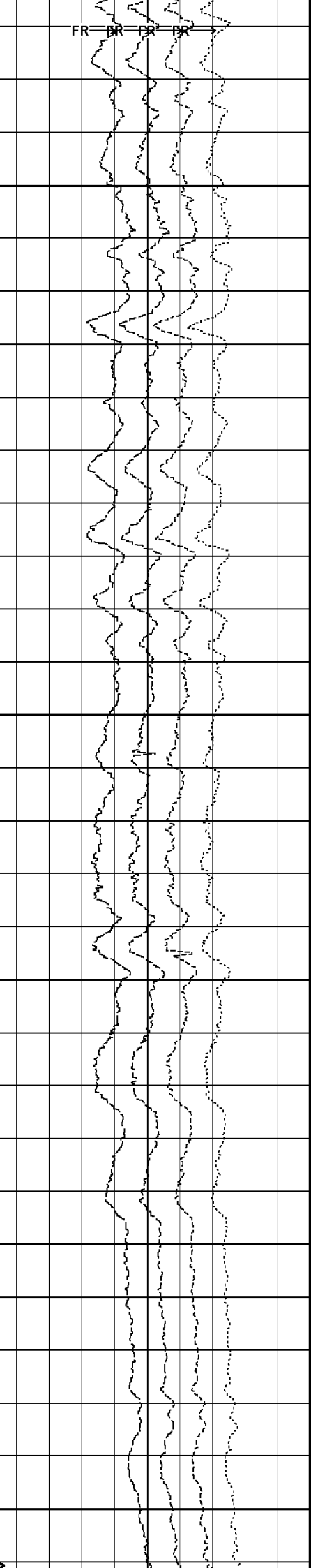
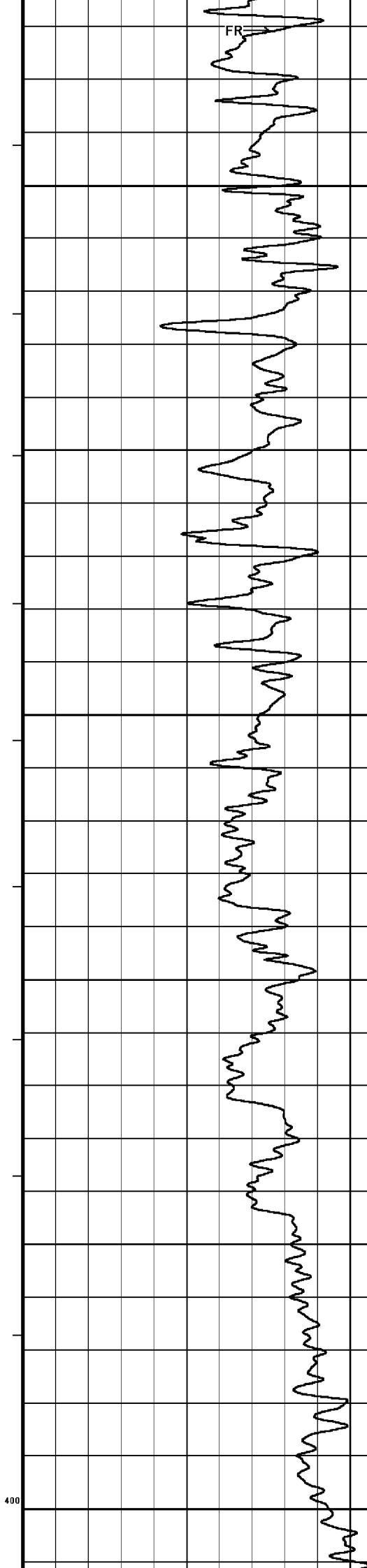
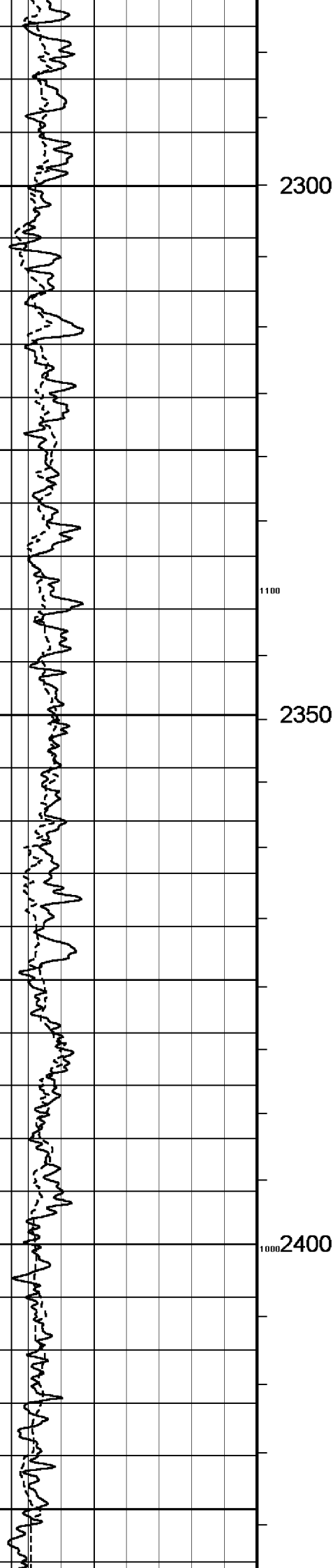


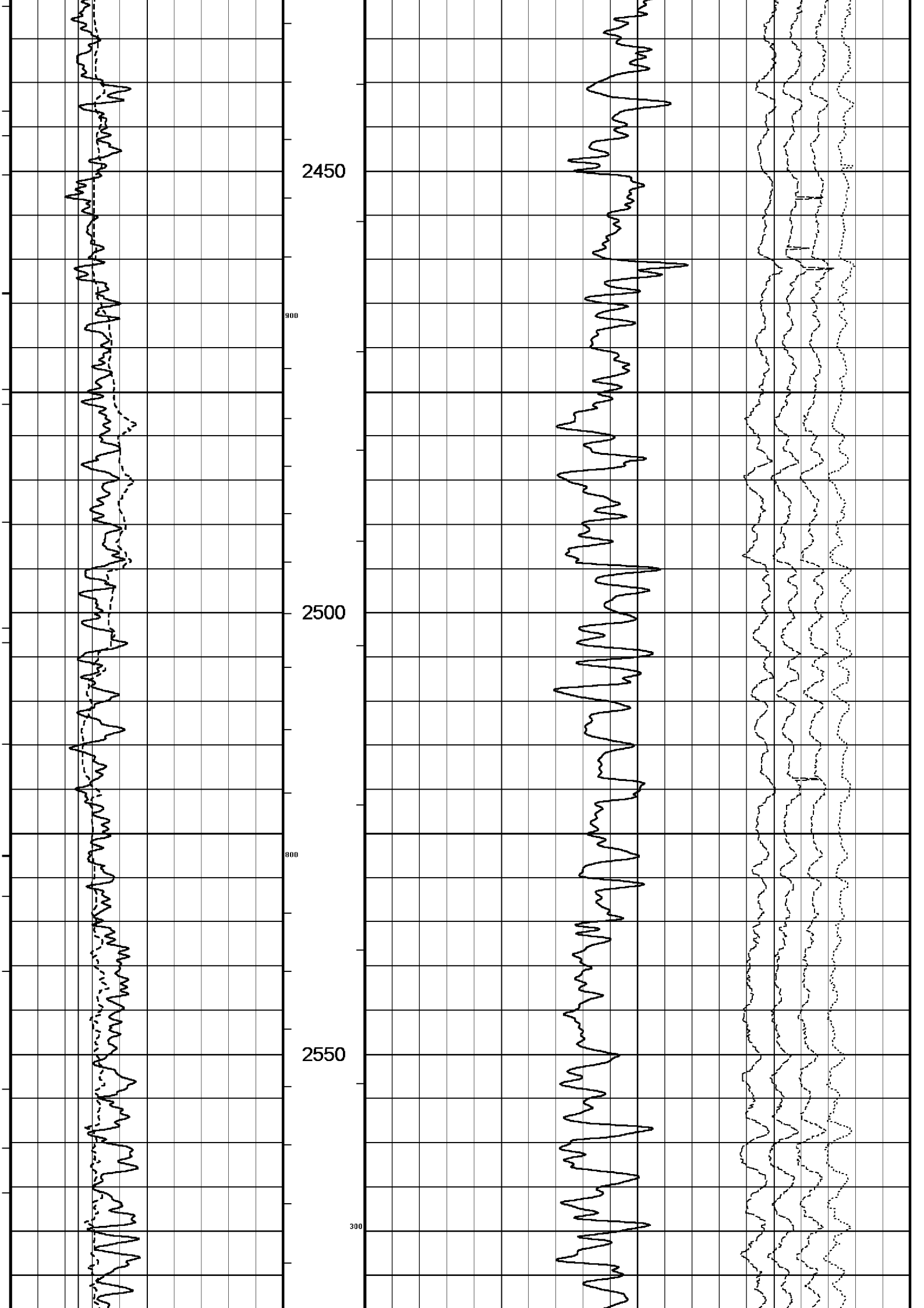


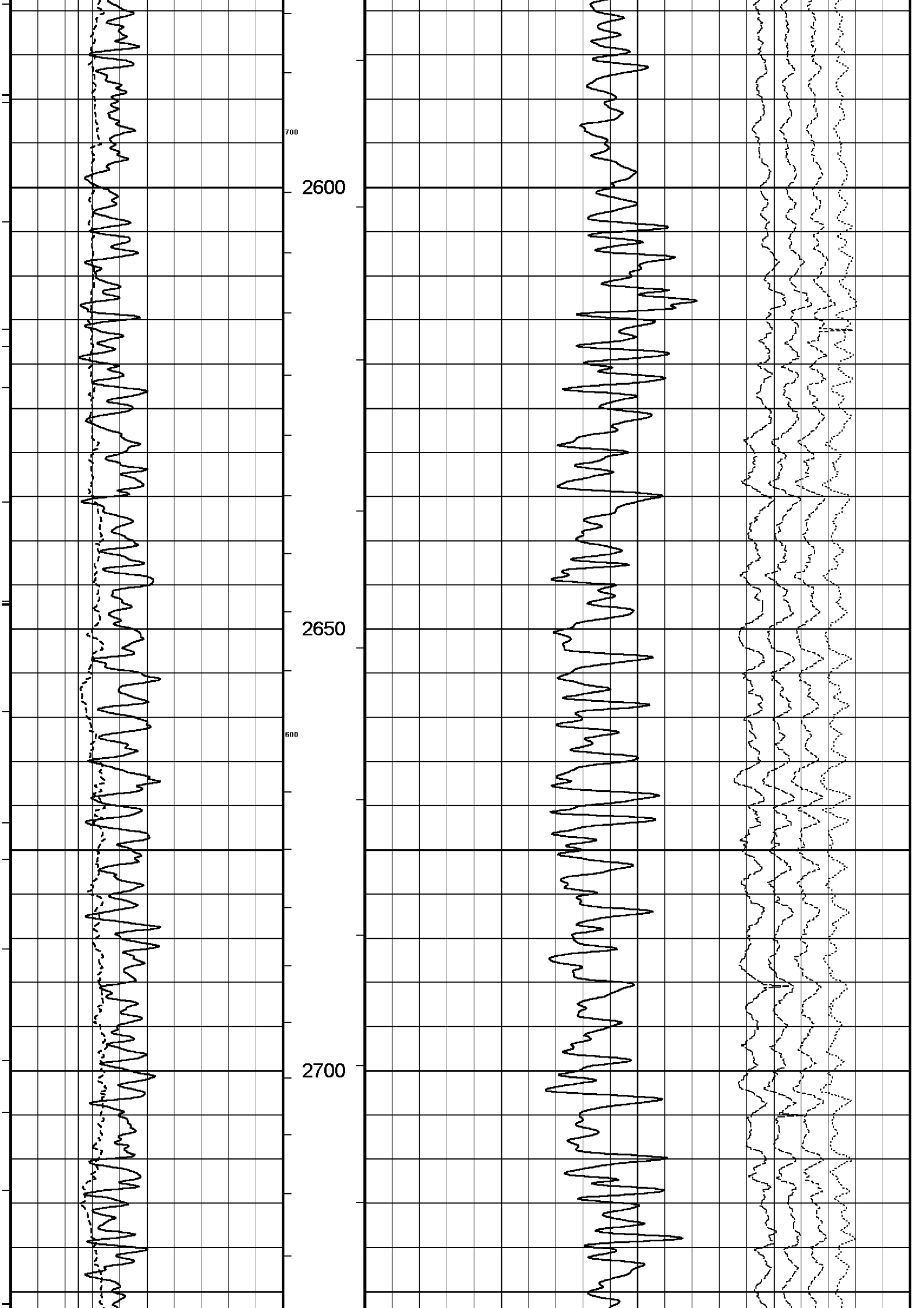


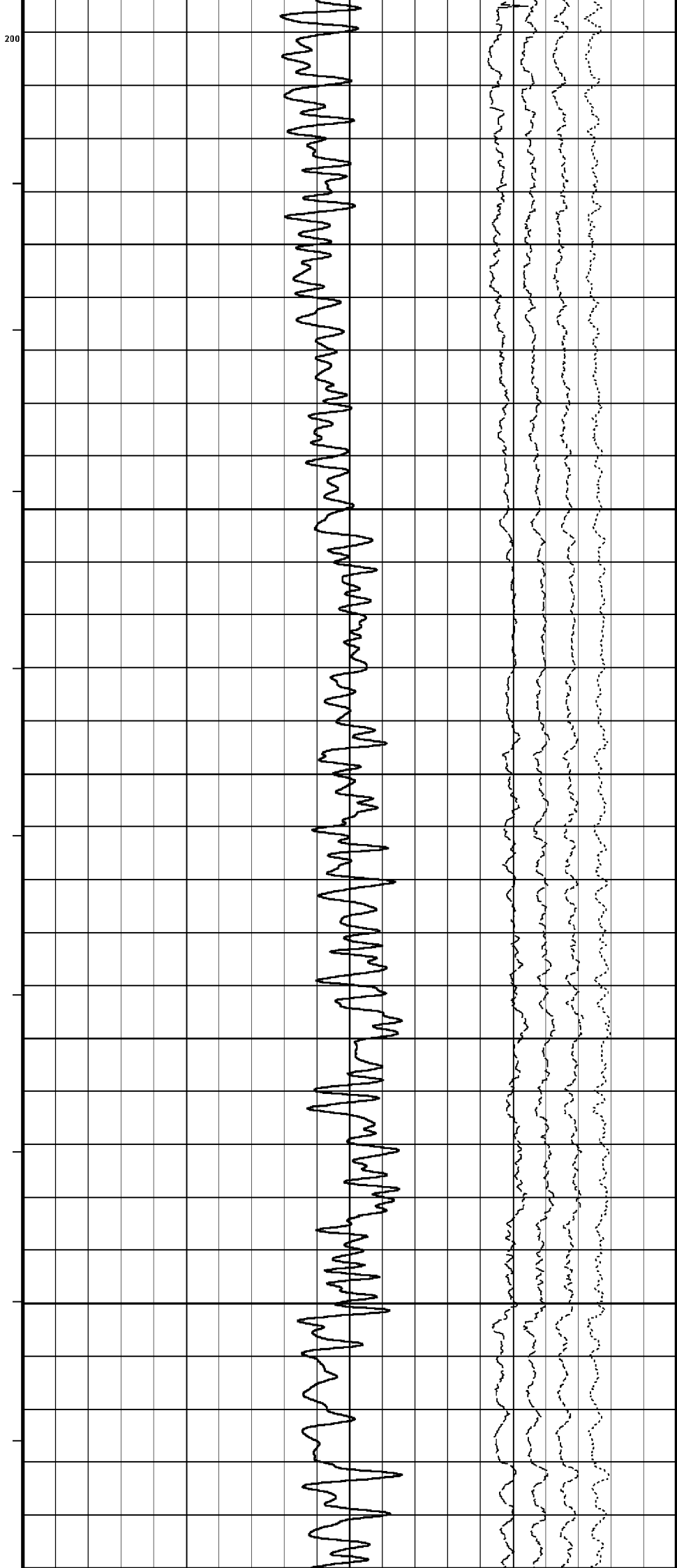
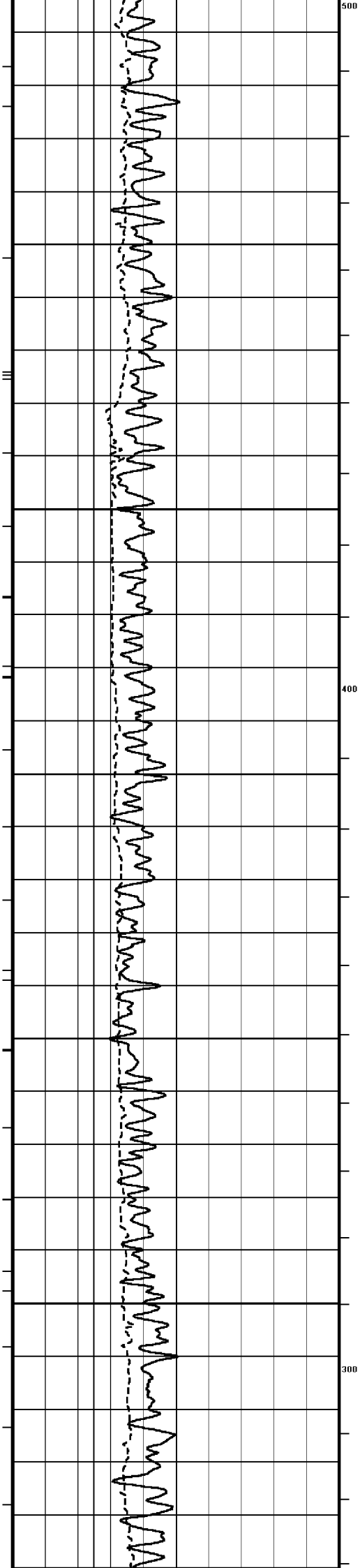


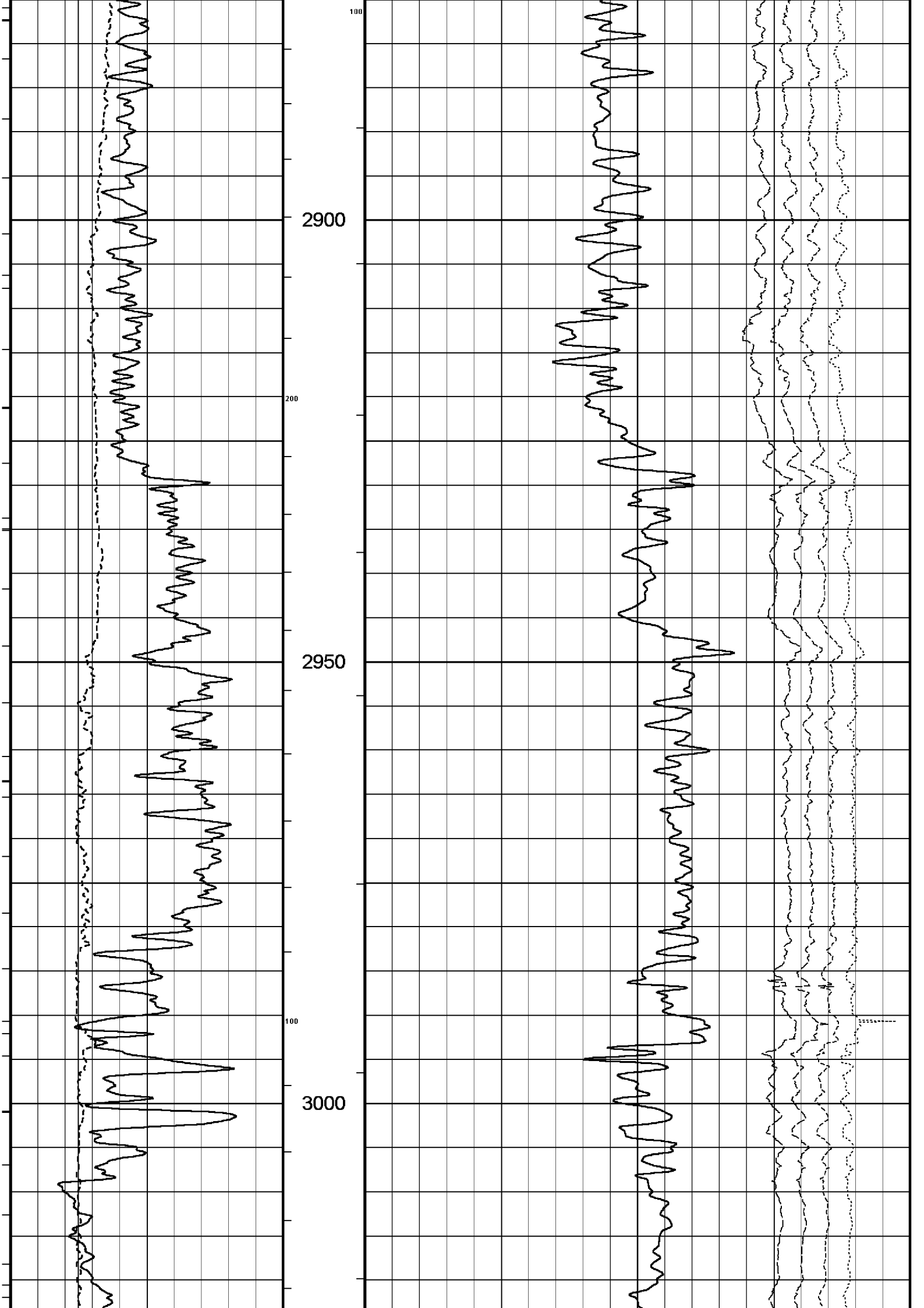


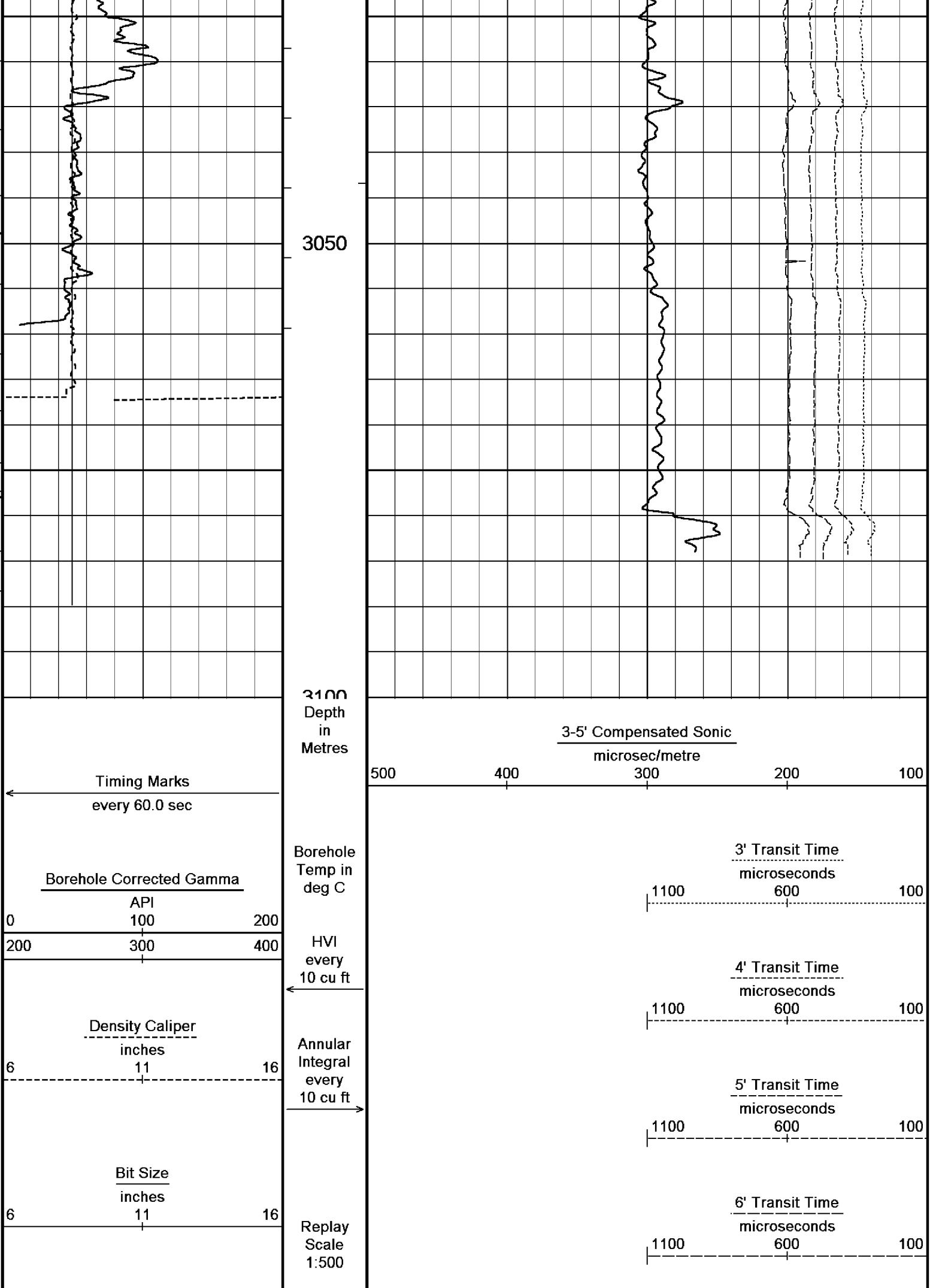












BEFORE SURVEY CALIBRATION

C:\logs\WKF_W27A\FIELD_DATA\WKF_W27A_MAIN_LOG.dta

General Constants All 000

General Parameters

Mud Resistivity	0.105	ohm-metres
Mud Resistivity Temperature	25.000	degrees C
Water Level	0.000	metres
Density/Neutron Processing	Wet Hole	

Hole/Annular Volume and Differential Caliper Parameters

HVOL Caliper 1	Density Caliper	
HVOL Caliper 2	Density Caliper	
Annular Volume Diameter	7.000	inches
Caliper for Differential Caliper	None	

Rwa Parameters

Porosity used	Base Density Porosity
Resistivity used	Deep Induction
RWA Constant A	0.610
RWA Constant M	2.150

High Resolution Temperature Calibration MCG 142

Field Calibration on 21-JUN-2006,15:43

	Measured	Calibrated(Deg C)
Lower	0.00	0.00
Upper	100.00	100.00

High Resolution Temperature Constants MCG 142

Pre-filter Length	11
-------------------	----

Gamma Calibration MCG 142

Field Calibration on 24-JUL-2006 01:45

	Measured	Calibrated (API)
Background	22	15
Calibrator (Gross)	1363	924
Calibrator (Net)	1341	909

Gamma Constants MCG 142

Gamma Calibrator Number	60	
Mud Density	1.16	gm/cc
Caliper Source for Processing	Density Caliper	
Tool Position	Eccentred	
Concentration of KCl	0.00	kppm

Caliper Calibration MPD 083

Base Calibration on 19-JUL-2006 12:33

Field Calibration on 24-JUL-2006,02:04

Base Calibration

Reading No	Measured	Calibrator Size (in)
1	15377	4.01
2	22794	5.99
3	31114	7.98
4	39638	9.94
5	48896	12.01
6	N/A	N/A

Field Calibration

Measured Caliper (in)	Actual Caliper (in)
7.98	7.98

Sonic Constants MSS 066

Maximum Boundary Contrast	100.00	micro-sec/ft
Fluid Transit Time	189.00	micro-sec/ft
Limestone Transit Time	47.50	micro-sec/ft
Sandstone Transit Time	55.50	micro-sec/ft
Dolomite Transit Time	43.50	micro-sec/ft

Sonic used for Porosities	3-5' Compensated Sonic
Correction for Sonde Skew	Applied

Cycle Stretch Algorithm	Applied	
MN3FT	N/A	micro-sec
MX3FT	N/A	micro-sec

Fixed Gate Parameters

Start Time (micro-sec)	End Time (micro-sec)	Discriminator (mV)	N/A
N/A	N/A	N/A	N/A
N/A	N/A	N/A	N/A
N/A	N/A	N/A	N/A
N/A	N/A	N/A	N/A
N/A	N/A	N/A	N/A

Down Hole Fixed Gate Parameters

Gate Start	N/A	micro-sec
Gate Width	N/A	micro-sec
Initial Discriminator Level	0.0000	mVolts

Full Waveform Parameters

Use 3' Waveform to derive TR	No	
Use 4' Waveform to derive TR	No	
Use 5' Waveform to derive TR	No	
Use 6' Waveform to derive TR	No	
3' Waveform Discriminator Level	0.45	mV
4' Waveform Discriminator Level	0.45	mV
5' Waveform Discriminator Level	0.35	mV
6' Waveform Discriminator Level	0.35	mV
3' Waveform Filter	None	
4' Waveform Filter	None	
5' Waveform Filter	None	
6' Waveform Filter	None	
Semblance Level	0.50	
Semblance Window Width	120.00	micro-sec
Sonic 1 Despiker	100.00	micro-sec/ft
Sonic 2 Despiker	100.00	micro-sec/ft

DOWNHOLE EQUIPMENT

C:\logs\WKF_W27A\FIELD_DATA\WKF_W27A_MAIN_LOG.dta

Compact Swivel Head Adaptor F
SHA 71 Length: 0.83 m Weight: 26.5 lb

Compact Knuckle Joint
SKJ 100 Length: 0.66 m Weight: 24.3 lb

Compact Battery Sub.
MBS 99 Length: 4.41 m Weight: 44.1 lb

Compact Inline Standoff B
MIS 31 Length: 0.65 m Weight: 15.4 lb

Compact Stiff Bridle Electrode Sub.
MBE 18 Length: 3.76 m Weight: 94.8 lb

Compact Inline Standoff B
MIS 141 Length: 0.65 m Weight: 15.4 lb



Compact Stiff Bridle Electrode Sub.
MBE 19 Length: 3.76 m Weight: 94.8 lb

Compact Inline Standoff B
MIS 129 Length: 0.65 m Weight: 15.4 lb

MBE 21 Compact Stiff Bridle Electrode
MLK 111 Length: 3.76 m Weight: 94.8 lb

Compact Inline Standoff B
MIS 135 Length: 0.65 m Weight: 15.4 lb

Compact Gamma
MCG 142 Length: 2.65 m Weight: 63.9 lb

Compact Memory Sub A.C
MMS 38 Length: 0.95 m Weight: 30.9 lb

Compact Inline Bowspring A
MIS 95 Length: 1.74 m Weight: 33.1 lb

Compact Swivel Head Adaptor F
SHA 64 Length: 0.83 m Weight: 26.5 lb

Compact Knuckle Joint
SKJ 101 Length: 0.66 m Weight: 24.3 lb

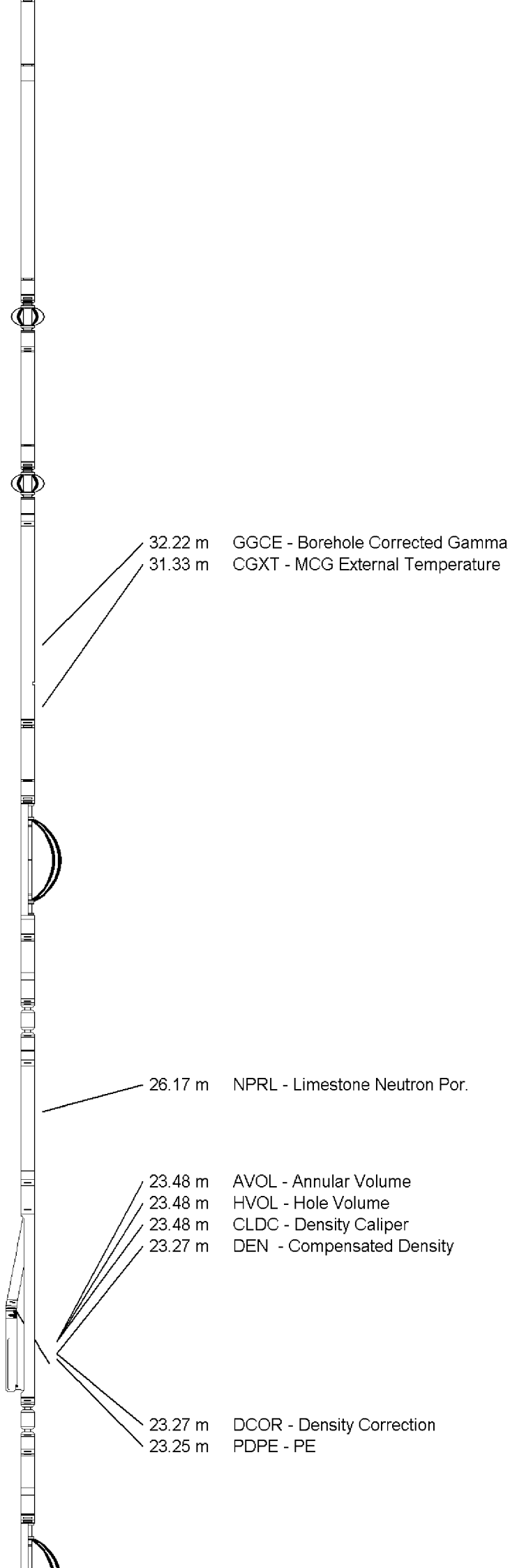
Compact Neutron
MDN 85 Length: 1.53 m Weight: 50.7 lb

Compact Density/Caliper
MPD 83 Length: 2.92 m Weight: 90.4 lb

Compact Knuckle Joint
SKJ 46 Length: 0.66 m Weight: 24.3 lb

Compact Swivel Head Adaptor F
SHA 73 Length: 0.83 m Weight: 26.5 lb

Compact Inline Bowspring A
MIS 24 Length: 1.74 m Weight: 33.1 lb



MIS 24 Length: 1.74 m Weight: 33.1 lb

Compact Inline Standoff B
MIS 132 Length: 0.65 m Weight: 15.4 lb

Compact Upper Guard Sub.
MUG 30 Length: 2.74 m Weight: 68.3 lb

Compact Inline Standoff B
MIS 139 Length: 0.65 m Weight: 15.4 lb

Compact Laterolog Electrode Sub.
MLE 31 Length: 3.76 m Weight: 92.6 lb

Compact Inline Standoff B
MIS 138 Length: 0.65 m Weight: 15.4 lb

Compact Lower Guard Sub.
MLG 7 Length: 2.44 m Weight: 55.1 lb

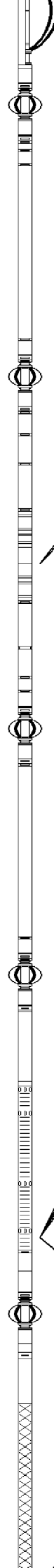
Compact Inline Standoff B
MIS 73 Length: 0.65 m Weight: 15.4 lb

Compact Sonic
MSS 66 Length: 3.82 m Weight: 72.8 lb

Compact Inline Standoff B
MIS 127 Length: 0.65 m Weight: 15.4 lb

Compact Induction
MAI 39 Length: 3.29 m Weight: 48.5 lb

Pressure Bung + Hole Finder
HFS 4 Length: 0.40 m Weight: 6.6 lb



13.35 m DDLL - Deep Laterolog
13.35 m DSLL - Shallow Laterolog

4.60 m TR22 - 5' Transit Time
4.60 m TR11 - 4' Transit Time
4.60 m TR21 - 3' Transit Time
4.60 m TR12 - 6' Transit Time

4.60 m DT35 - 3-5' Compensated Sonic

Tool Zero (0.44m from bottom)

All measurements relative to tool zero.

Total Length: 54.01 m Weight: 1265.5 lb



COMPANY	ESSO AUSTRALIA PTY.LTD
WELL	WKF W27A
FIELD	KINGFISH GDA94
PROVINCE/COUNTY	BASS STRAIT, VICTORIA
COUNTRY/STATE	AUSTRALIA

Elevation Kelly Bushing		metres	First Reading	3090.00	metres
Elevation Drill Floor	33.43	metres	Depth Driller	3093.00	metres
Elevation Ground Level	-76.13	metres	Depth Logger	3093.00	metres



COMPENSATED SONIC
1:500 MD